



SPECIFICATIONS :

- . Full bore
- . Anti-blow out stem
- . Locking device / Red handle

USE :

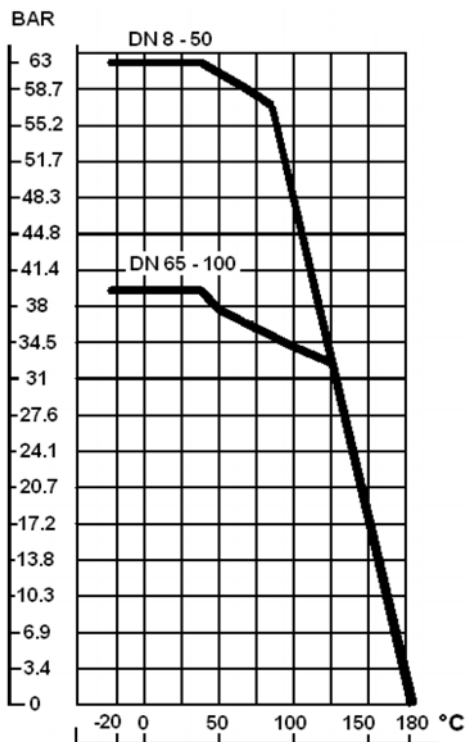
- . For all common fluids
- . Max. Temperature Ts : 180°C see graph
- . Max. Pressure Ps : 63 bars see graph

RANGE :

- . Female/Female BSP carbon steel **Ref. 796** 1/4" to 4"
- . But welding carbon steel **Ref. 797** DN8 to DN100
- . Socket welding carbon steel **Ref. 798** DN8 to DN100
- . Female/Female BSP stainless steel **Ref. 790** 1/4" to 4"
- . But welding stainless steel **Ref. 791** DN8 to DN100
- . Socket welding stainless steel **Ref. 792** DN8 to DN100
- . Female/Female NPT stainless steel **Ref. 744** 1/4" to 2"

MATERIALS :

DESIGNATION	MATERIALS 796/797/798	MATERIALS 790/791/792/744
Body	A 216 WCB	A 351 CF8M
End	A 216 WCB	A 351 CF8M
Ball	Stainless steel 316	Stainless steel 316
Stem	Stainless steel 316	Stainless steel 316
Seat	PTFE	PTFE
Gasket	PTFE	PTFE
Packing	PTFE	PTFE
Screw	Stainless steel 304	Stainless steel 304
Handle	Stainless steel 304	Stainless steel 304

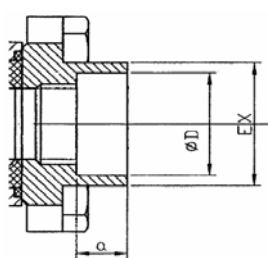


BOLT TIGHTENING TABLE :

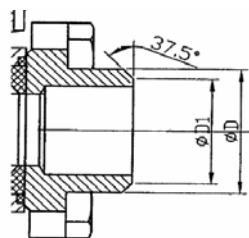
	Bolt torque (Nm)
DN 1/4 - 3/8"	4
DN 1/2 - 3/4"	8
DN 1"	10
DN 1"1/4	13
DN 1"1/2 - 2"	20
DN 2"1/2	35
DN 3"	45
DN 4"	65

SIZE :

DN	1/4"	3/8"	1/2"	3/4"	1"	1" 1/4	1" 1/2	2"	2" 1/2	3"	4"
L (F/F)	59	60	65,5	76,5	86,2	103,1	118	131,5	164,5	182,7	229,6
L(B+SW)	59	60	65,5	76,5	86,2	103,1	118	131,5	174,5	192,7	239,6
B (F/F)	20	22	23,3	30,8	37,8	47	57	68	86,1	98,2	126,1
B (B+SW)	20	22	23,3	30,8	37,8	47	57	68	96,1	108,2	136,1
H	52	52	63	68	79	88	97	108	128	140	172
E	108	108	113	113	135	135	160	160	230	230	335
X	26	29	34,5	44	53,5	65	75,5	95	120	143,5	177,5
D (BW)	14	17,5	22	27,5	34	43	49	61	76,5	90	115
D (SW)	14,1	17,6	21,9	27,4	34,2	42,8	48,8	61,1	77	89,9	115,4
D1	12	14,5	17	22,5	28,6	36	43	54	68	84	104
EX	20	22	26	33	40	48	55	67	87	101	130
a	10	10	10	13	13	13	13	16	16	16	19
C	38	39	46	54	61	69	81	99	123	145	230
T	25	28	32	40	45	53	64	79	98	116	198
V	6	6	8	8	8	8	12	12	14	16	20
Weight	0,33	0,34	0,51	0,79	1,09	1,93	2,8	4,25	8	12,1	26



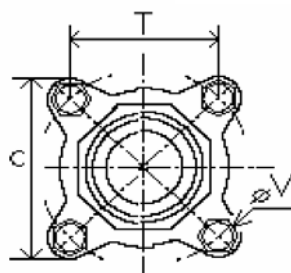
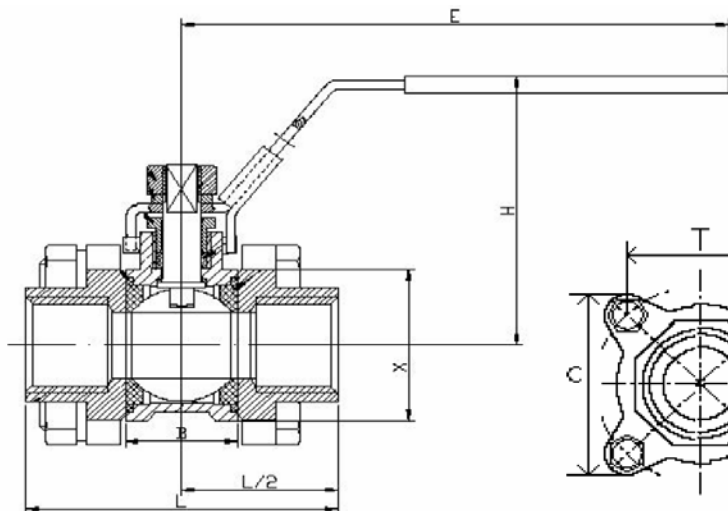
End cap SW



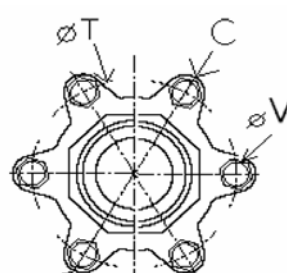
End cap BW

OPTIONS :

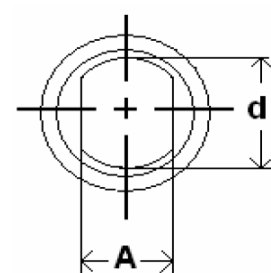
REHAUSSE	
DN	Hauteur
1/4"	125,5
3/8"	125,5
1/2"	125,5
3/4"	125,5
1"	125,5
1" 1/4	125,5
1" 1/2	127,5
2"	127,5



DN 1/4-3"



DN 4"



STEM SIZE :

DN	1/4"	3/8"	1/2"	3/4"	1"	1" 1/4	1" 1/2	2"	2" 1/2	3"	4"
A	5	5	5	5	6,5	6,5	8,5	8,5	10	10	16
d	8	8	8	8	10	10	12	12	14	14	20