

V46 111 4100/400°C -- 3100/550°C DN15-DN25
 V46 121 4100/400°C -- 3100/550°C DN15-DN25

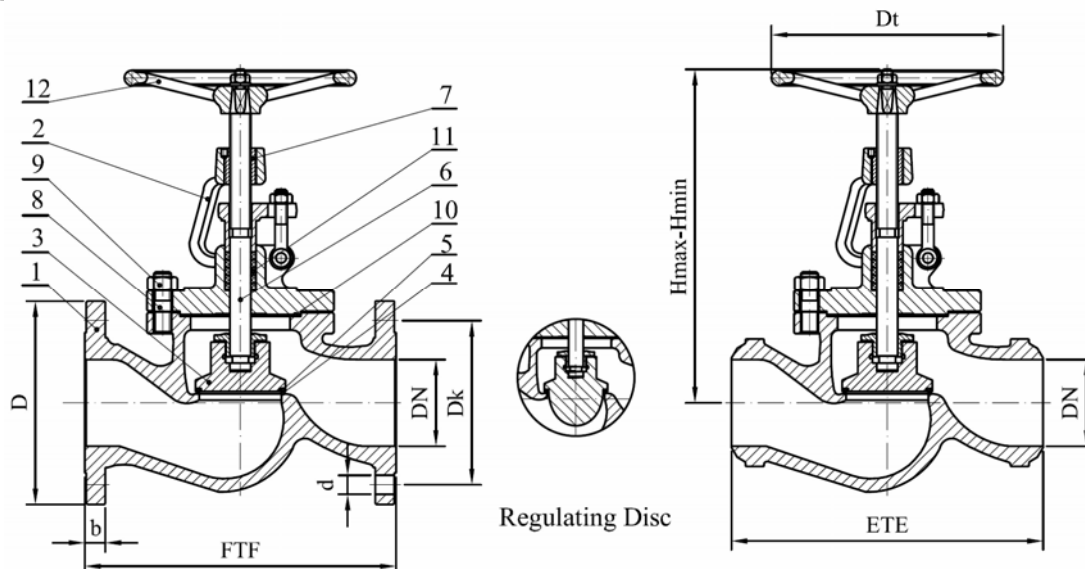
VENTIL UZAVÍRACÍ VYSOKOTLAKÝ PŘÍRUBOVÝ - FTF
VENTIL UZAVÍRACÍ VYSOKOTLAKÝ PŘÍVAŘOVACÍ - ETE

V46 111 5100/400°C -- 2100/550°C DN32-DN200
 V46 121 5100/400°C -- 2100/550°C DN32-DN200

List of materials

Table A.1.1

Item	Part		APPLICATION			
			up to 400 °C	up to 450 °C	up to 550 °C	
1	BODY	up to DN 25	1.0460 (3E0)	1.7335 (5E0)	1.7335 (5E0)	1.4552 (12E0)
		over DN 25	1.0619 (3E0)	1.7357 (5E0)	1.7357 (5E0)	1.4408 (14E0)
2	BONNET	up to DN 25	1.0460 (3E0)	1.7335 (5E0)	1.7335 (5E0)	1.4552 (12E0)
		over DN 25	1.0619 (3E0)	1.7357 (5E0)	1.7357 (5E0)	1.4408 (14E0)
3	DISC	up to DN 50	1.4021	1.7335 (5E0)	1.7335 (5E0)	1.4552 (12E0)
		over DN 50	1.0619	1.7357 (5E0)	1.7357 (5E0)	1.4408 (14E0)
4	BODY SEATING SURFACE		min 13% Cr welded	min 17% Cr welded	STELLITE welded	
5	TRIM	DISC SEATING SURFACE	up to DN 50	1.4021 hardened	min 17% Cr welded	STELLITE welded
			over DN 50	min 13% Cr welded		
6	STEM		min 13% Cr welded			1.4571
7	STEM NUT		2.0940 (or 1.1191)			2.0940
8	STUD BOLTS		1.7225		1.7709	1.4301
9	NUTS		1.1191		1.7709	1.4301
10	BONNET GASKET		reinforced pure graphite			
11	STEM PACKING		pure graphite			
12	HANDWHEEL		cast iron			



Standards

Table A.1.2

Globe Valves according to EN 13709	PN 25 and PN 40	PN 63 and PN 100	PN 160*
Face-to-face dimensions according to	EN 558-1, Serie 1	EN 558-1, Serie 2	
Flanged ends according to	EN 1092-1, Type B1	EN 1092-1, Type B2*	
End-to-end dimensions according to	EN 12982, Serie 64	EN 12982, Serie 65	
Welding ends according to	EN 12627		
*- for PN 160, according to DIN 2501, DIN 2638, DIN 2548			

Dimensions PN 100

Table A.1.5

DN	FTF mm	ETE mm	D mm	b mm	Dk mm	d mm	n	H max mm	H min mm	Dt mm	Weight FTF kg	Weight ETE kg
15	210	150	105	20	75	14	4	235	220	160	6,8	4,4
20	230	150	130	22	90	18	4	235	220	160	8,5	4,6
25	230	160	140	24	100	18	4	235	220	160	11	4,8
32	260	180	155	26	110	22	4	315	295	200	17	11,2
40	260	210	170	28	125	22	4	315	295	200	21,4	12
50	300	250	195	30	145	26	4	370	334	250	35,2	23,5
65	340	340	220	34	170	26	8	415	385	315	43	33,5
80	380	380	230	36	180	26	8	492	457	315	70	67
100	430	430	265	40	210	30	8	585	540	400	114	96
125	500	500	315	40	250	33	8	635	580	400	188	155
150	550	550	355	44	290	33	12	705	645	500	295	251
200	650	650	430	52	360	36	12	960	870	500	500	423

Z16 111 4100/400°C -- 3100/550°C DN15-DN25
 Z16 121 4100/400°C -- 3100/550°C DN15-DN25

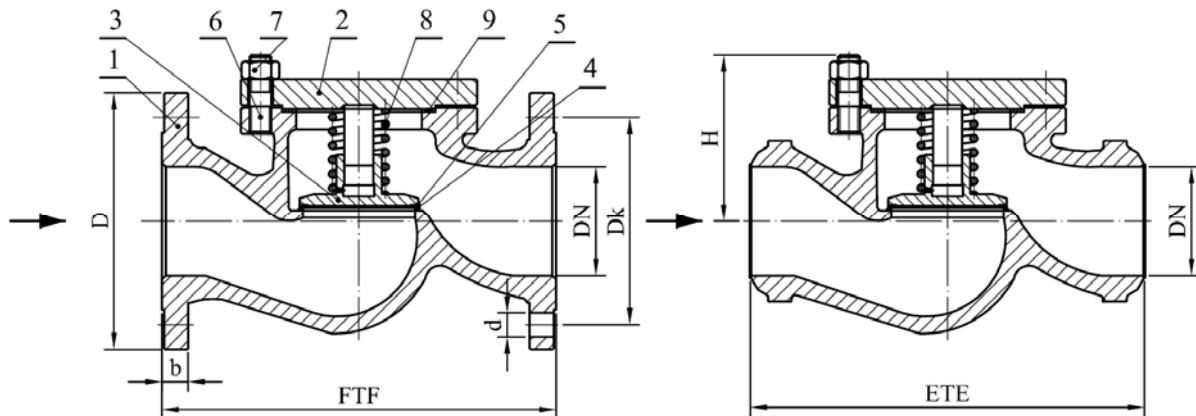
VENTIL ZPĚTNÝ PŘÍRUBOVÝ VYSOKOTLAKÝ – FTF
VENTIL ZPĚTNÝ PŘÍVAŘOVACÍ VYSOKOTLAKÝ – ETE

Z16 111 5100/400°C -- 2100/550°C DN32-DN200
 Z16 121 5100/400°C -- 2100/550°C DN32-DN200

List of materials

Table B.1.1

Item	Part		APPLICATION			
			up to 400 °C	up to 450 °C	up to 550 °C	
1	BODY	up to DN 25	1.0460 (3E0)	1.7335 (5E0)	1.7335 (5E0)	1.4552 (12E0) 1.4408 (14E0)
		over DN 25	1.0619 (3E0)	1.7357 (5E0)	1.7357 (5E0)	
2	COVER	up to DN 25	1.0460 (3E0)	1.7335 (5E0)	1.7335 (5E0)	1.4552 (12E0) 1.4408 (14E0)
		over DN 25	1.0619 (3E0)	1.7357 (5E0)	1.7357 (5E0)	
3	DISC	up to DN 50	1.4021	1.7335 (5E0)	1.7335 (5E0)	1.4552 (12E0) 1.4408 (14E0)
		over DN 50	1.0619	1.7357 (5E0)	1.7357 (5E0)	
4	BODY SEATING SURFACES		min 13% Cr welded	min 17% Cr welded	STELLITE welded	
5	TRIM	DISC SEATING SURFACES	up to DN 50	1.4021 hardened	min 17% Cr welded	STELLITE welded
			over DN 50	min 13% Cr welded		
6	STUD BOLTS		1.7225		1.7709	1.4301
7	NUTS		1.1191		1.7709	1.4301
8	SPRING		1.5024		1.8159	1.4562
9	COVER GASKET		reinforced pure graphite			



Standards

Table B.1.2

Globe Lift Check Valve according to EN 14341	PN 25 and PN 40	PN 63 and PN 100	PN 160*
Face-to-face dimensions according to	EN 558-1, Serie 1	EN 558-1, Serie 2	
Flanged ends according to	EN 1092-1, Type B1	EN 1092-1, Type B2*	
End-to-end dimensions according to	EN 12982, Serie 64	EN 12982, Serie 65	
Welding ends according to	EN 12627		
*- for PN 160, according to DIN 2501, DIN 2638, DIN 2548			

Dimensions PN 100

Table B.1.5

DN	FTF mm	ETE mm	D mm	b mm	Dk mm	d mm	n	H mm	Weight FTF kg	Weight ETE kg
15	210	150	105	20	75	14	4	80	5,1	2,5
20	230	150	130	22	90	18	4	80	6,5	2,7
25	230	160	140	24	100	18	4	80	7,7	3
32	260	180	155	24	110	22	4	110	13,5	8,2
40	260	210	170	26	125	22	4	110	15	9
50	300	250	195	28	145	26	4	143	25	15
65	340	340	220	30	170	26	8	173	37	24
80	380	380	230	32	180	26	8	192	58	43
100	430	430	265	36	210	30	8	235	94	73
125	500	500	315	40	250	33	8	260	156	123
150	550	550	355	44	290	33	12	315	245	201
200	650	650	430	52	360	36	12	380	415	346

D71 118 4100/400°C -- 3100/550°C DN15-DN25
 D71 128 4100/400°C -- 3100/550°C DN15-DN25

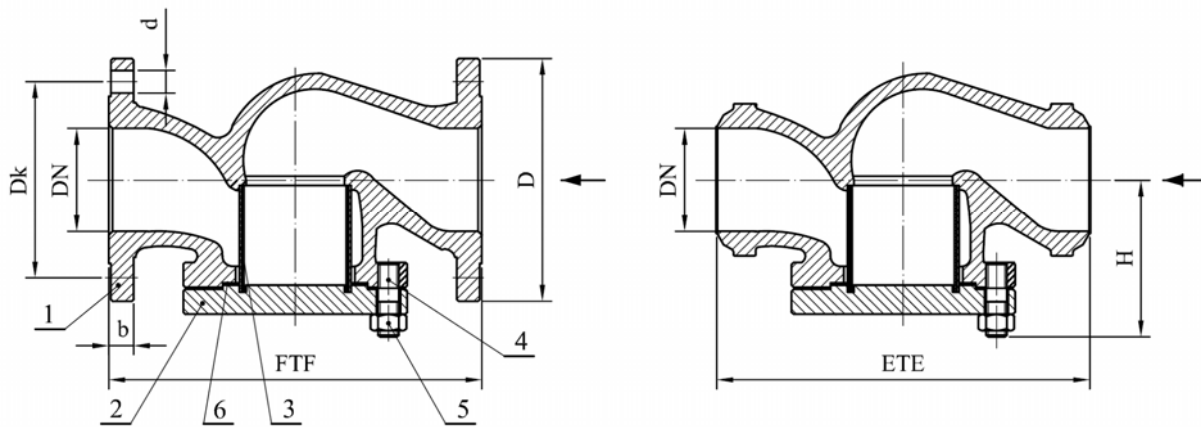
D71 118 5100/400°C -- 2100/550°C DN32-DN200
 D71 128 5100/400°C -- 2100/550°C DN32-DN200

FILTR PŘÍRUBOVÝ VYSOKOTLAKÝ – FTF
FILTR PŘÍVAŘOVACÍ VYSOKOTLAKÝ – FTF

List of materials

Table C.1.1

Item	Part		APPLICATION		
			up to 400 °C		up to 550 °C
1	BODY	up to DN 25	1.0460 (3E0)	1.7335 (5E0)	1.4552 (12E0) 1.4408 (14E0)
		over DN 25	1.0619 (3E0)	1.7357 (5E0)	
2	COVER	up to DN 25	1.0460 (3E0)	1.7335 (5E0)	1.4552 (12E0) 1.4408 (14E0)
		over DN 25	1.0619 (3E0)	1.7357 (5E0)	
3	NET		1.4301		
4	STUD BOLTS		1.7225	1.7709	1.4301
5	NUTS		1.1191	1.7709	1.4301
6	COVER GASKET		reinforced pure graphite		



Standards

Table C.1.2

Dirt traps according to EN Standards	PN 25 and PN 40	PN 63 and PN 100	PN 160*
Face-to-face dimensions according to	EN 558-1, Serie 1	EN 558-1, Serie 2	
Flanged ends according to	EN 1092-1, Type B1	EN 1092-1, Type B2*	
End-to-end dimensions according to	EN 12982, Serie 64	EN 12982, Serie 65	
Welding ends according to	EN 12627		
*- for PN 160, according to DIN 2501, DIN 2638, DIN 2548			

Dimensions PN 100

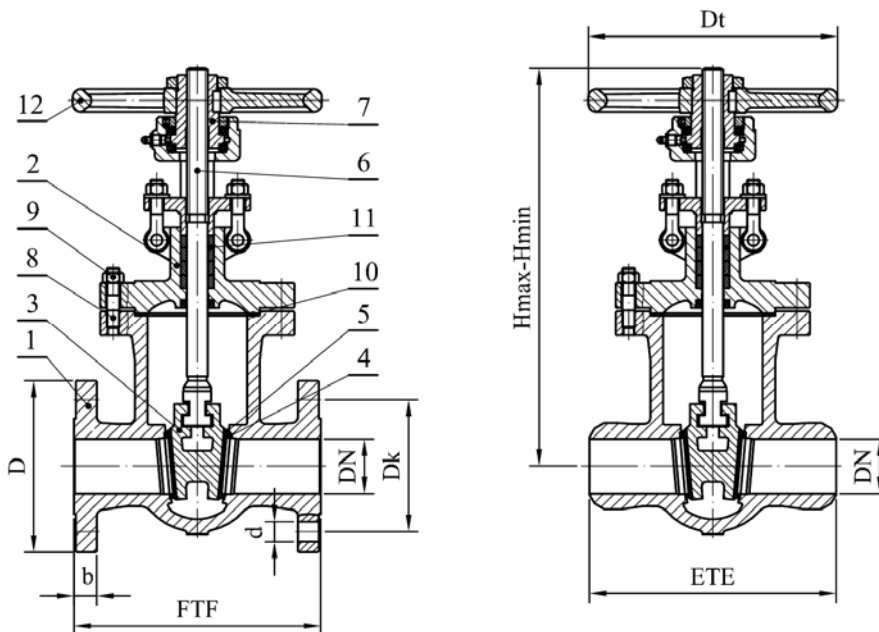
Table C.1.5

DN	FTF mm	ETE mm	D mm	b mm	Dk mm	d mm	n	H mm	Weight FTF kg	Weight ETE kg
15	210	150	105	20	75	14	4	80	4,9	2,3
20	230	150	130	22	90	18	4	80	6,2	2,4
25	230	160	140	24	100	18	4	80	7,3	2,6
32	260	180	155	24	110	22	4	110	12,8	7,5
40	260	210	170	26	125	22	4	110	14	8
50	300	250	195	28	145	26	4	143	23,5	13,5
65	340	340	220	30	170	26	8	173	34	21
80	380	380	230	32	180	26	8	192	54	39
100	430	430	265	36	210	30	8	235	89	68
125	500	500	315	40	250	33	8	260	149	116
150	550	550	355	44	290	33	12	315	236	192
200	650	650	430	52	360	36	12	380	403	334

List of materials

Table D.1.1

Item	Part	APPLICATION			
		up to 400 °C	up to 450 °C	up to 550 °C	
1	BODY	1.0619 (3E0)	1.7357 (5E0)	1.7357 (5E0)	1.4552 (12E0) 1.4408 (14E0)
2	BONNET	1.0619 (3E0)	1.7357 (5E0)	1.7357 (5E0)	1.4552 (12E0) 1.4408 (14E0)
3	WEDGE	1.0619 (3E0)	1.7357 (5E0)	1.7357 (5E0)	1.4552 (12E0) 1.4408 (14E0)
4	TRIM	BODY SEATING SURFACES	min 13% Cr welded	min 17% Cr welded	STELLITE welded
5		WEDGE SEATING SURFACES	min 13% Cr welded	min 17% Cr welded	STELLITE welded
6		STEM	min 13% Cr		
7	STEM NUT	2.0940 (or 1.1191)			2.0940
8	STUD BOLTS	1.7225		1.7709	1.4301
9	NUTS	1.1191		1.7709	1.4301
10	BONNET GASKET	reinforced pure graphite			
11	STEM PACKING	pure graphite			
12	HANDWHEEL	cast steel			



Standards

Table D.1.2

GATE VALVE according to EN 1984	PN 16 and PN 25	PN 40	PN 63 and PN 100
Face-to-face dimensions according to	EN 558-1, Serie 15	EN 558-1, Serie 26	EN 558-1, Serie 26
Flanged ends according to	EN 1092-1, Type B1	EN 1092-1, Type B1	EN 1092-1, Type B2
End-to-end dimensions according to	EN 12982, Serie 15	EN 12982, Serie 26	
Welding ends according to	EN 12627		

Dimensions PN 100

Table D.1.7

DN	FTF mm	ETE mm	D mm	b mm	Dk mm	d mm	n	H max mm	H min mm	Dt mm	Weight FTF kg	Weight ETE kg
40	240	240	170	26	125	22	4	302	254	150	16	8,5
50	250	250	195	28	145	26	4	455	385	250	50	40
65	290	290	220	30	170	26	8	520	440	250	63	49
80	310	310	230	32	180	26	8	555	459	250	77	61
100	350	350	265	36	210	30	8	664	544	315	120	97
125	400	400	315	40	250	33	8	746	601	315	164	128
150	450	450	355	44	290	33	8	921	746	500	261	212
200	550	550	430	52	360	36	12	1090	865	500	434	352
250	650	650	505	60	430	39	12	1335	1060	630	689	563
300	750	750	585	68	500	42	16	1514	1184	630	1000	813