

Abb. CONA® M 616

Thermostatic steam trap

- ▶ DN15 – DN50
- ▶ PN16 – 40 / ANSI150 – ANSI300
- ▶ Temperature up to 450°C
- ▶ for discharging of slight to highly sub-cooled condensate
- ▶ automatic air-venting during start up and operation of the plant
- ▶ multiple ...
- ▶ body material
 - ▶ EN-JL 1040
 - ▶ 1.0460
 - ▶ 16Mo3
 - ▶ 1.4301
 - ▶ 1.4305
 - ▶ 1.4541
- ▶ Robust and resistant to water-hammer
- ▶ Integrated non return protection
- ▶ Construction:
 - ▶ With inside strainer
 - ▶ With outside strainer – Fig. 612/613(Y)
- ▶ Available types of capsule (sub-cooling from 5K to 40K)
- ▶ optional
 - ▶ blow down valve

CONA[®] M - Details



Highly responsive for efficient performance (using ultra-sensitive rapid-reaction control fluid).

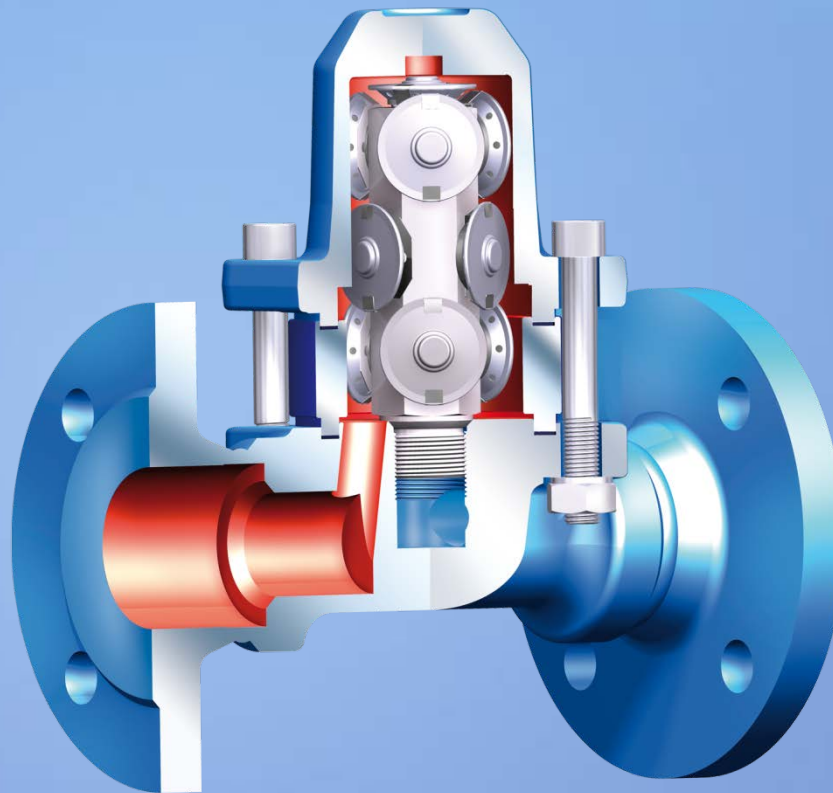
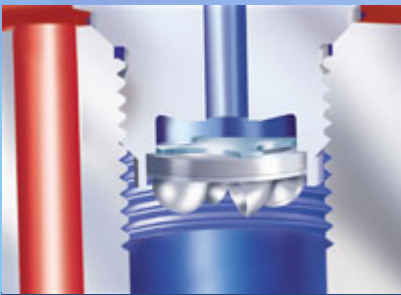


Abb. CONA[®] M 616

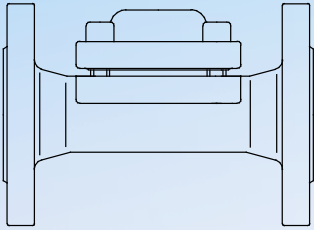


Water hammer protection for long life (integral check valve).

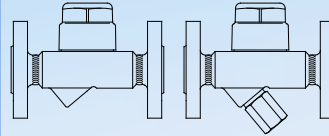


Contamination protection for long life (easy-to-clean external strainer).

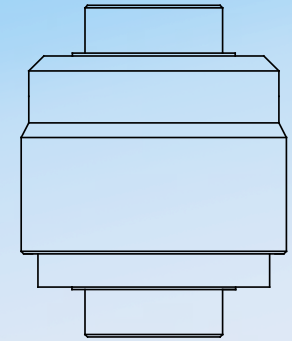
CONA[®] M - Variants



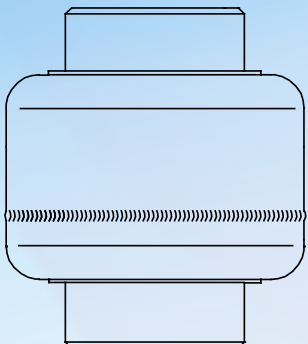
- ▶ Thermostatic steam trap with inside strainer and flanges



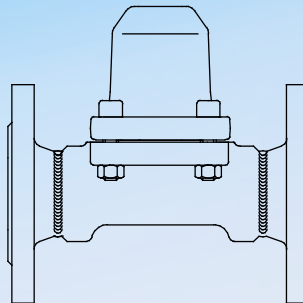
- ▶ Thermostatic steam trap with outside strainer



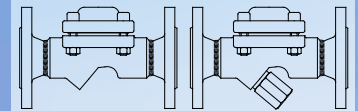
- ▶ Thermostatic steam trap made of stainless steel compact - screwed version



- ▶ Thermostatic steam trap made of stainless steel compact - welded version

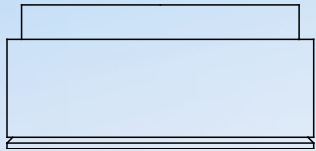


- ▶ Thermostatic steam trap with inside strainer and pilot operated for very high flow capacity



- ▶ Thermostatic steam trap with inside strainer and screwed socket and pilot operated

CONA[®] M - Variants



- ▶ Wafer pattern-thermostatic steam trap