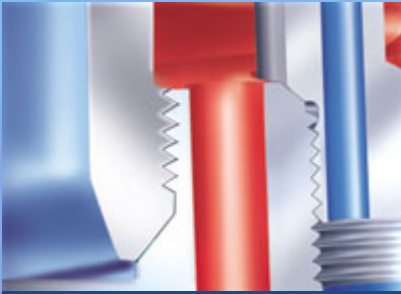


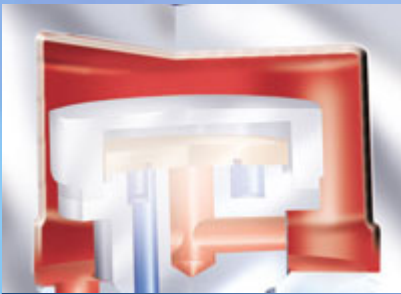
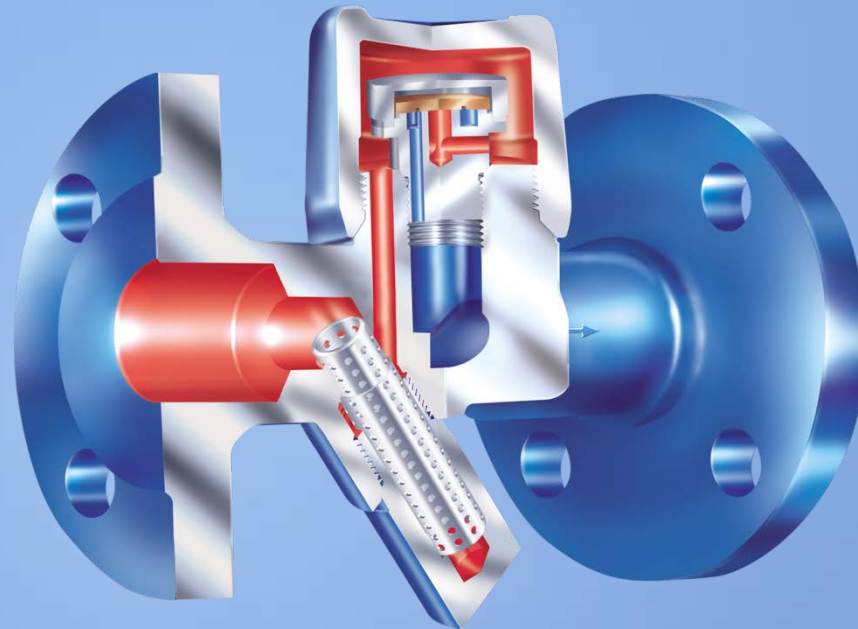
## Thermodynamic steam trap

- ▶ DN10 – DN25
- ▶ PN40 – PN63 / ANSI150 – ANSI300
- ▶ Temperature up to 450°C
- ▶ For discharging of slight to highly sub-cooled condensate
- ▶ Intermittent mode of operation
- ▶ multiple ...
- ▶ body material, for example
  - ▶ 1.0460
  - ▶ 1.4541
  - ▶ 16Mo3
  - ▶ A743 CA40
- ▶ Robust and insensitive to water-hammer
- ▶ Integrated non return protection
- ▶ Constructions:
  - ▶ With inside strainer – Fig. 640
  - ▶ With outside strainer – Fig. 641 (Y)
- ▶ Optimized design for quick installation
- ▶ Gasket-free sealing of the screwed cap
- ▶ Installation in any position
- ▶ Heat chamber minimizes the impact of weather conditions on the trap's performance (PN40 DN15-25)
- ▶ Replaceable controller-unit

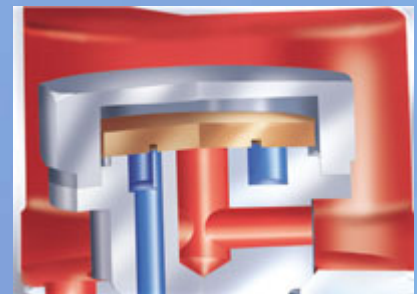
# CONA<sup>®</sup> TD - Details



Metal seals for long life and economy. Rapid-assembly housing for optimum handling. Seal-free. (See also CONA B).

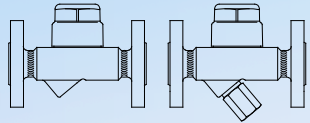


Cap with heat chamber (water-shock resistance) impervious to weather and ensures high performance.

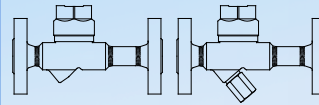


Integral non-return function for high performance

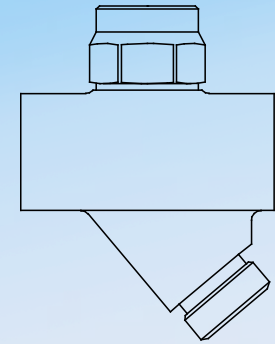
# CONA® TD - Variants



- ▶ Thermodynamic steam trap with inside or outside strainer and flanges



- ▶ Thermodynamic steam trap with inside or outside strainer and flanges



- ▶ Thermodynamic steam trap with outside strainer and screwed socket